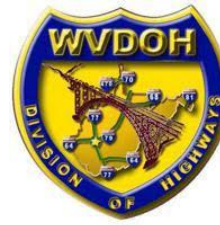


Heath Creek Slab Bridge +2 Replacement Project

State Project U306-10-7.95 00, Federal Project STP-0010(287)D

Barboursville, Cabell County, West Virginia



The West Virginia Department of Transportation, Department of Highways (WVDOH) is seeking input on their project to replace three bridges in Cabell County. Below, please find a summary of the project as well as instructions for commenting and how to find more information. **Please provide comments by January 23, 2026.**

Purpose and Need for the Project

The purpose of the project is to replace three existing bridges that carry WV Route 10 over Left Fork of Heath Creek, Heath Creek, and Upper Heath Creek in the City of Barboursville, Cabell County, West Virginia. The existing bridges, Heath Creek Slab Bridge, Family Dollar Bridge, and Nida's Used Car Bridge, are owned by the WVDOH and were built in the mid-20th century. The Heath Creek Slab Bridge is a single-span concrete slab on concrete abutments approximately 23-feet long by 31-feet wide. The Family Dollar Bridge is a single-span concrete beam deck on concrete abutments approximately 43-feet long by 30-feet wide. The Nida's Used Car Bridge is a single-span concrete slab on concrete abutments approximately 28-feet long by 31-feet wide. The 2024 and 2025 Bridge Inspection reports determined that the bridges are in poor condition with concrete spalling on the superstructures (slab, T-beam, and/or channel beam) and concrete cracking on concrete piers and abutments.

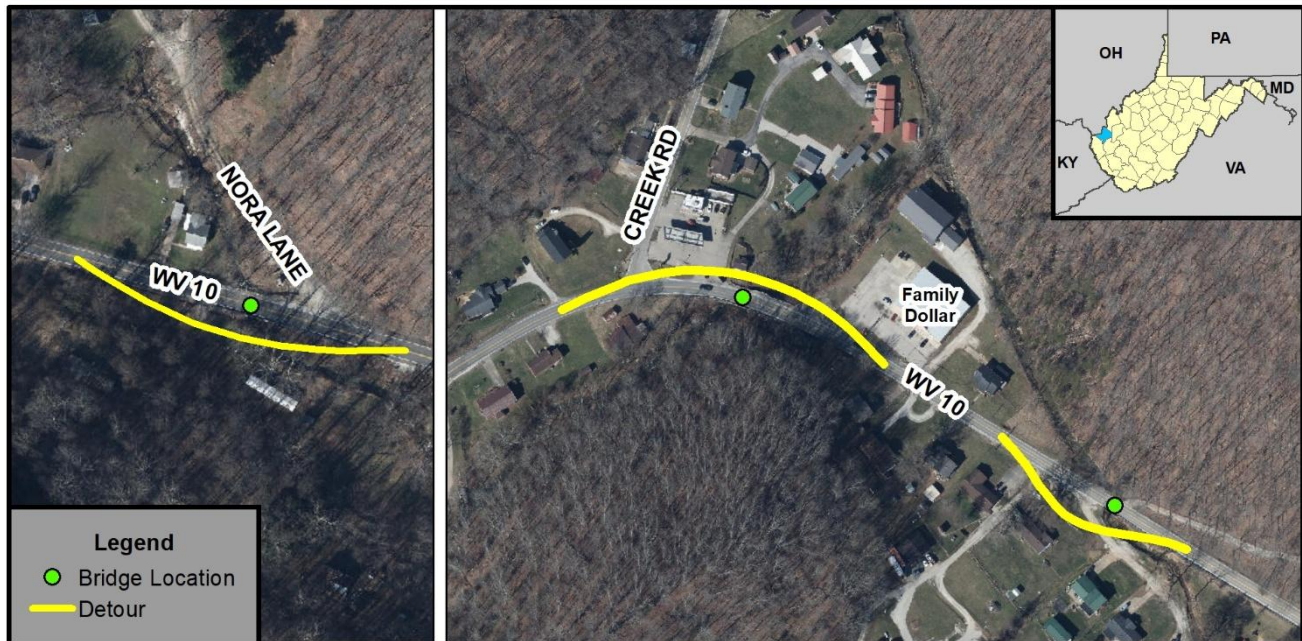
Preferred Alternative

The project includes the replacement of three bridges, Heath Creek Slab Bridge (Left Fork of Heath Creek), Family Dollar Bridge (Heath Creek), and Nida's Used Car Bridge (Upper Heath Creek) on existing location. Acquisition of permanent right-of-way and temporary construction easements are anticipated. One business take is anticipated. During construction, traffic will be maintained on a two-way temporary detour structure at each bridge – currently proposed to the downstream/south side of Heath Creek Slab, downstream/north side of Family Dollar Bridge, and upstream/south side of Nida's Used Car Bridge. Detour routes will be in place for an estimated 12 months. Construction cost will be approximately \$4.5 million.

How it will help:



**Replaces Existing
Deficient Bridges
with New Bridges
That Meets
Current Design
Standards**



Comments submission to:

Engineering Division, WVDOH
1900 Kanawha Blvd., Building 5, Room 820
Charleston, WV 25305



Comment can also be submitted
via the WVDOH website:

https://transportation.wv.gov/highways/TecnicalSupport/CommentsOnProjects/Pages/Heath_Creek_Slab.aspx

Comments are due January 23, 2026